

USB AUDIO LOGGER

Record up to 16 Lines
on any Windows Server



Installation is a snap:

1. Attach any analog audio source, up to 16 lines or extensions per logger.
2. Snap a USB cable to a PC or Server.
3. Load the CD, adjust levels, and you're recording!

Get crystal-clear recordings. Save time. Improve accuracy. Eliminate disputes. Record everything, or just selected lines. Sort, access, email, and retrieve recordings from any PC on the network. Monitor live calls in real-time. Locate recordings instantly using time, Caller-ID, numbers dialed, DID extension, or DTMF signaling.

Everything you need to record is included, even the USB cable. Add a PC, and you're up and running! Call today and try your logger risk-free.

Tech Specs:

Input Level	-40dBm to +10dBm peak level
Connector	Amphenol 50-pin, 25 pair
Power	90-240V Autosensing
Triggers	Hook Voltage, VOX, Complex, Continuous, Timed, Sampled
CODECs	True telecom G.711 with brick wall switched capacitor filter
Impedance	>10K DC Blocked Input
REN	0.1
Dimensions	6.3Dx3.5Tx19W "2-U" RETMA Removable rack ears
Shipping Weight	8.7lbs
Warranty	1 year standard 6 year Optional
Part No.....	F16W

- Records from outside phone lines, analog extensions, microphones or radios in perfect digital quality.
- Installs with a quick, simple connection between the phones and your server. Existing equipment is unaffected. No PBX programming or alteration is required. Digital Loop-back testing lets you listen-in live for easy installation.
- Calls may be securely accessed worldwide via your existing LAN.
- Recordings are individually time and date stamped for easy recall.
- Caller ID and touch tones are decoded for easy search and recall.
- Individually adjustable level controls give you crystal clear recording from a variety of signal sources.
- Calls from each line and day are organized in separate directories for quick access. Every recording includes a digital signature with time and date stamps for traceability.
- Automatic disk space management saves room for your most important calls. Old calls can be backed-up or optionally deleted to conserve disk space.
- On-screen level meters show activity on all channels.
- Call Analysis Software sorts recordings using DTMF signaling. Calls can be easily located using DID trunk numbers, Caller ID, or outbound number dialed.
- Calls are recorded in standard .wav (u-law G.711) format for playback on any PC or Mac using Media Player. No proprietary playback software is required.
- Real Time Player software provides instant recall and live monitoring of any channel from remote network workstations.
- USB plug-and-play with Windows 2003, 2008, 2010, XP, 7, 8

Applicable laws must be observed when recording.
© 2004-2014 DLI. US patent 6,122,239, additional pending.



DIGITAL LOGGERS, INC.

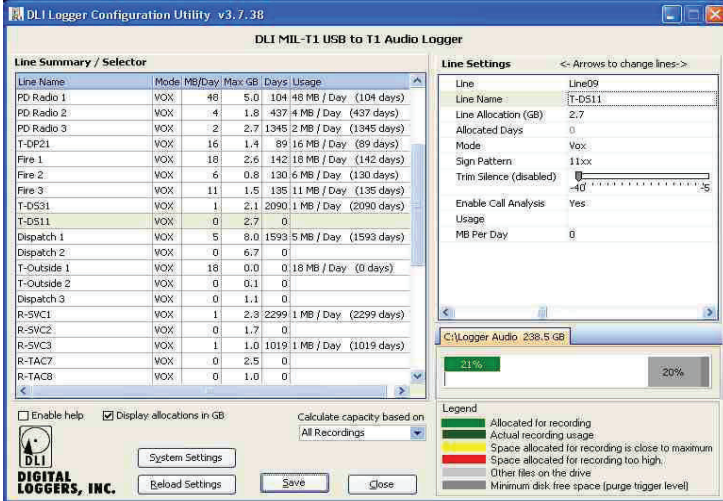
2695 Walsh Avenue, Santa Clara, CA 95051
(408) 330-5599, Fax (408) 969-2655
digital-loggers.com

INCLUDED SOFTWARE

Set up and Configuration Wizard

An easy-to-use windows setup utility makes configuration a breeze.

Get it right the first time, even with little or no telecom experience.

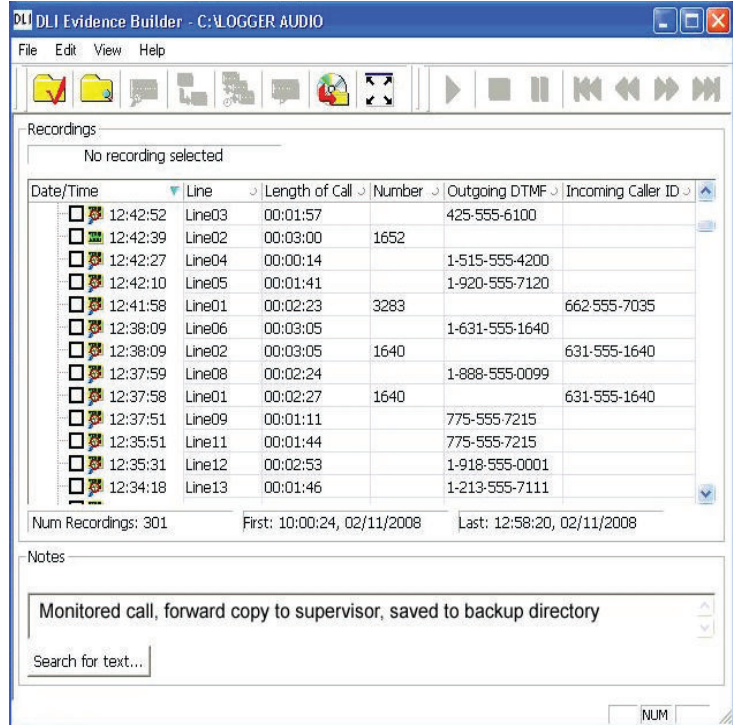


Evidence Builder Call Analyzer

Evidence Builder Software is a powerful program used to locate and analyze recordings in a spreadsheet format.

Use it to analyze incoming calls, create lists, sort calls, and search by time, date, line, DTMF, DID, nummber dialed, etc.

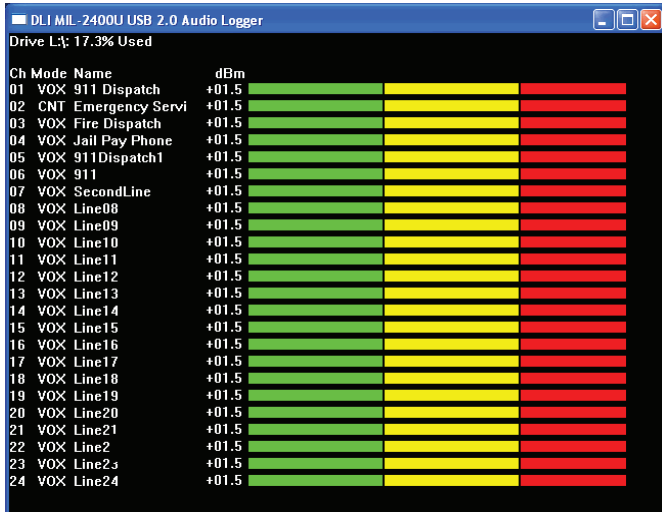
Quickly locate recordings on a local workstation or server. Copy, email, or transfer calls to an audio editor.



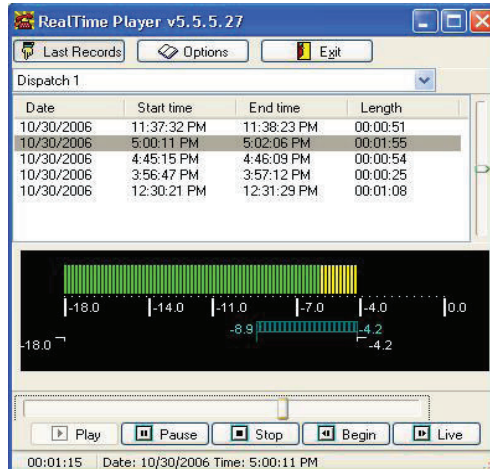
Recording Manager

The main logging application gives you a real-time display of incoming recordings.

Calls are neatly organized in daily directories. Disk space is automatically managed. One click leads you directly to the recordings for that line.



Live Remote Monitoring



Local or remote users can be assigned access privileges to allow remote interception and live monitoring of calls.

Monitor locally via LAN or world-wide via WAN.

PBX Call Detail Recorder

Get detailed reports on every call, even internal calls from one PBX extension to another. Capture all the call detail information provided from your PBX serial port. Document calls between extensions.

ANI, ALI, or SMDR data streams are logged using our call detail recording utility. This program logs all serial data from up to 8 PBX or modem ports simultaneously.

