

Silence Notifier

## User's guide



## Product overview

Silence Notifier allows to monitor selected directories for audio recordings created by DLI Audio Logger and send e-mail notifications and/or log to system error log when no audio appears for a specified amount of time.

Silence Notifier's main features:

- Monitors an unlimited number of directories (subdirectories are monitored automatically).
- Applies time-of-day and day-of-week restrictions to find out if silence should be notified about.
- Configurable logging to error log and/or by email.
- Supports secure authentication (SSL).
- Runs as a Windows service.

## System Requirements

- A 1-GHz or faster processor with 256 MB RAM or more. Windows 2000, 2003, XP, Vista or 7.
- E-mail account set up and accessible from the target PC (not required if logging to system error log only).

## Interoperability Notes

Silence Notifier is compatible with DLI Audio Logger at least starting with version 3.1.4.0. Due to its nature, Silence Notifier is sensitive to the way audio files are recorded. In particular, Personal Logger versions prior to 3.1.x are not supported, so you should update your PL installation.

## Quick Installation

1. Insert the distribution CD and install Silence Notifier, selecting the components you need.
2. If you are reinstalling Silence Notifier, your configuration files will be kept intact unless you check the appropriate items in the Tasks list.

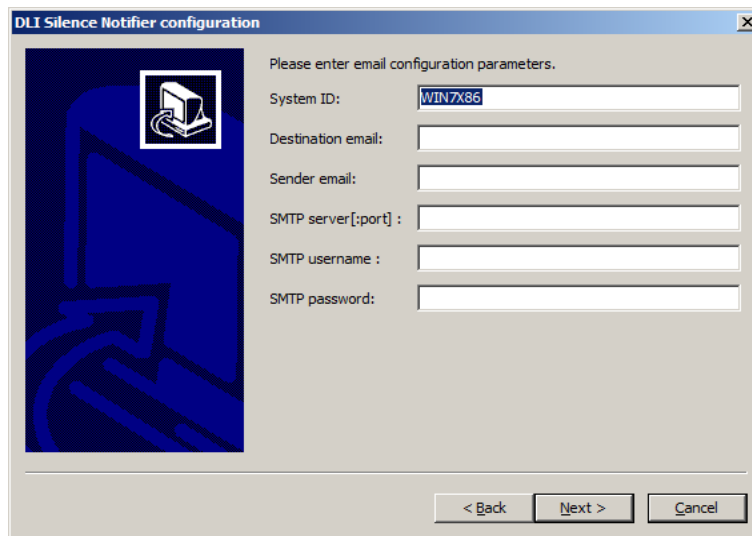
After installation the wizard may, at your option, launch the installed service.

## Background

The DLI Audio Logger stores audio recordings in files located in subdirectories of user-configurable directories, typically one directory per recording channel. We will refer to each such directory as a 'recording directory'.

## Configuration

During installation, you will be presented with an initial configuration wizard screen. It allows to configure the most basic parameters. Also, any of them can be changed later in the configuration editor.



DLI Silence Notifier configuration

Please enter email configuration parameters.

System ID: WIN7X86

Destination email:

Sender email:

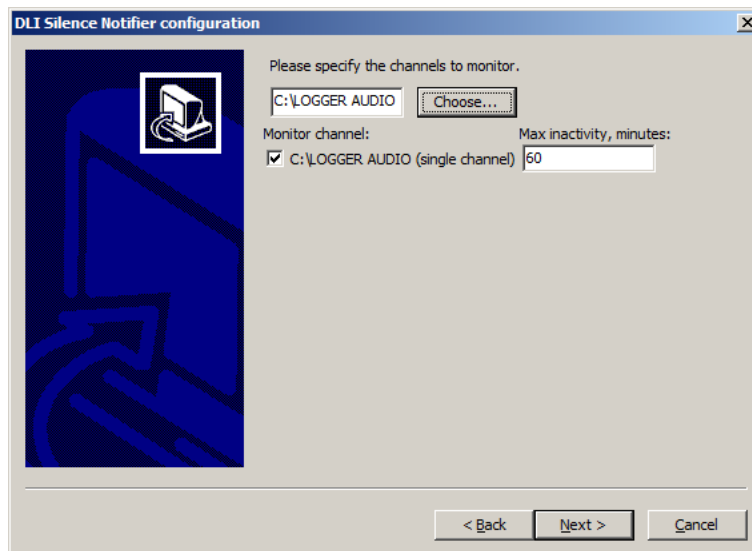
SMTP server[:port]:

SMTP username:

SMTP password:

< Back Next > Cancel

The wizard needs you to enter an identifier for the monitored system which will be included in notification emails. It is the machine name by default, but can have any value. You also need to enter the email setup parameters (destination and source addresses, SMTP server and its authentication information if required by the server).



DLI Silence Notifier configuration

Please specify the channels to monitor.

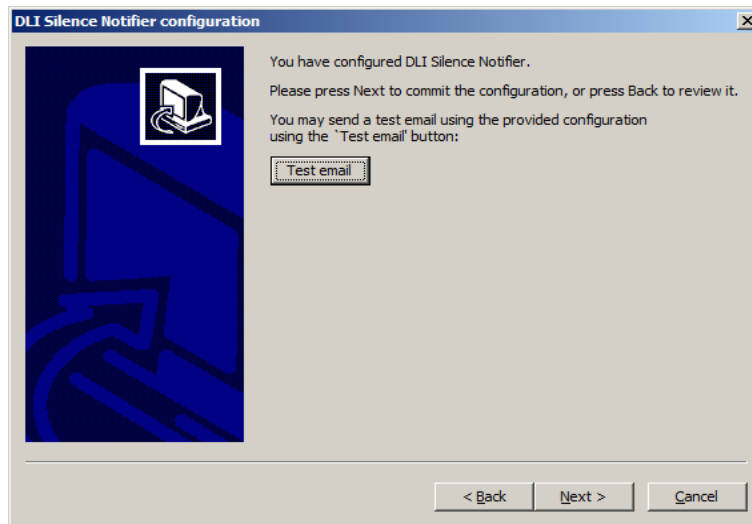
C:\LOGGER AUDIO Choose...

Monitor channel: Max inactivity, minutes:

C:\LOGGER AUDIO (single channel) 60

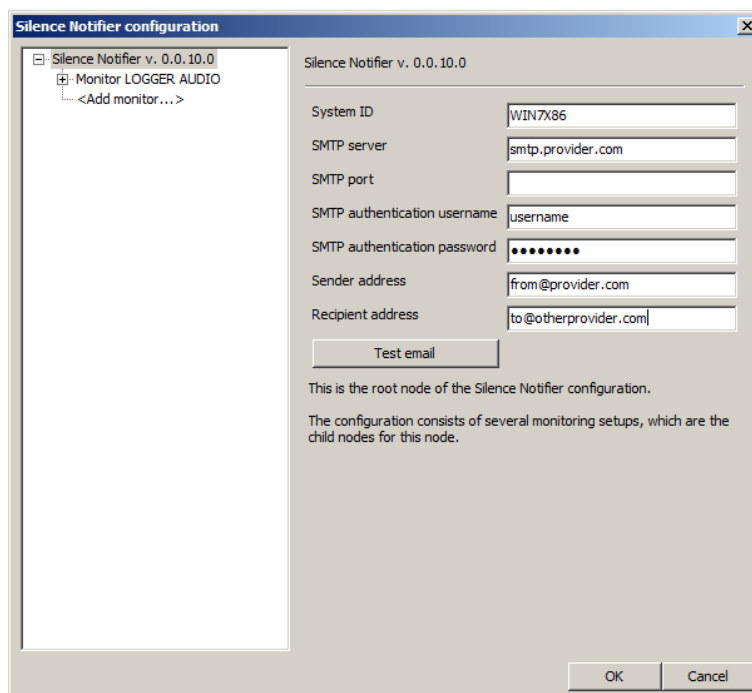
< Back Next > Cancel

You need to enter the location of your recording directory. It is often 'C:\LOGGER AUDIO', and the default is read from logger.ini. With Personal Logger you will be monitoring the only channel, while with Audio Logger the directory will have subdirectories which will also be shown. So you can set monitoring options both for individual channels and overall. Unchecking the directory checkbox results in it being omitted from the configuration (not the same as having it included and disabled, see below).



After configuration, you will have the option to send a test email with the specified settings. Though not necessary, it's recommended, and you will get a warning if you don't. If the test fails, you may go back to the email configuration screen to tweak settings, or fix any other problems indicated by testing.

Further configuration is done with the configuration editor. It can be reached by using the Silence Notifier Configuration desktop/Start menu icons.



The left side of the configuration window represents the configuration tree. The right side displays the property panel, which shows the properties and commands specific to the selected configuration item:

- The item title.
- Property names and values (if applicable to the current item).
- Extended description of the item.
- Replacement variants for the current item.
- Button to delete the current item (if applicable).

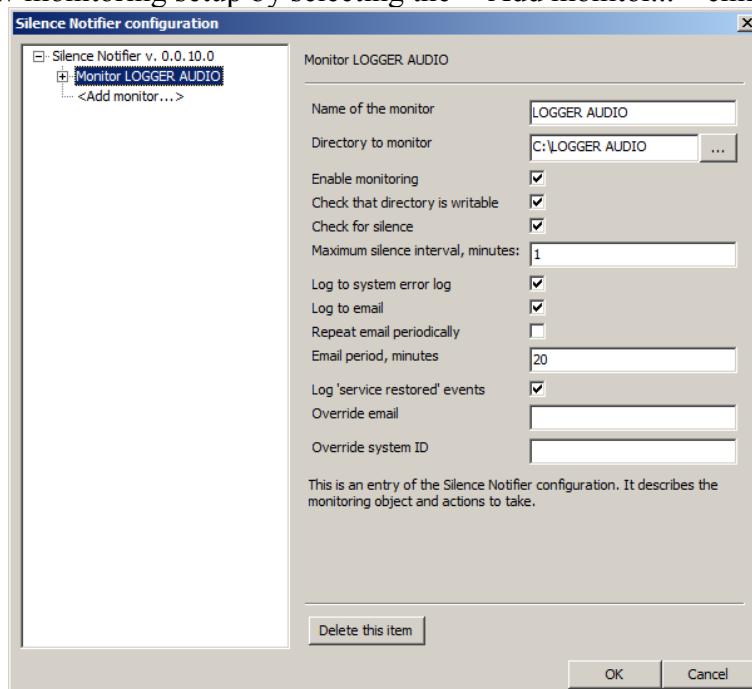
The configuration root specifies the email parameters, which are basically the same that are entered in the initial configuration screen (except for the optional SMTP server port). The destination email and the system ID can be overridden in individual directory configurations (see below).

Standard editing commands (Cut, Copy, Paste, Delete) are available in the property value edit boxes. You can also apply them to leaves or branches of the configuration tree by right-clicking a tree item, which brings up its context menu. This is useful if you want to make several copies of a certain configuration for different directories. You can only cut or delete optional configuration tree items. You can paste into existing items to overwrite them, or into the '<Add...>' placeholders to create new items. Only items of the correct kind can be pasted.

Hovering a property name or its value will generally give you a pop-up tip about it.

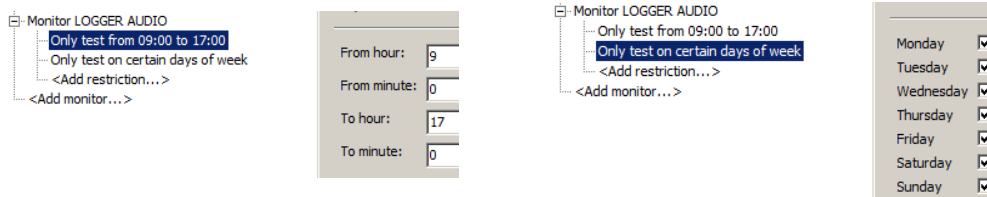
Silence Notifier configuration consists of several monitoring setups, all of which are child nodes for the root node. Each of them describes the recording directory to watch, the options and rules of error reporting and possibly system ID and target email override values.

You can create a new monitoring setup by selecting the '<Add monitor...>' child of the root item.



The names of monitoring setups are their properties. They are for your convenience only. In particular, they are not required to be unique. The per-monitor configuration allows to disable monitoring completely ("Enable monitoring" checkbox) or selectively ("Check that directory is writable" and "Check for silence" checkboxes), customize the logging method ("Log to..." checkboxes), set the initial silence interval and email notification period, as well as override the destination email and the system ID for this monitor.

Limiting the monitoring time is done by adding restrictions to the monitor node:



Restrictions can be copied and pasted if you need to apply them to multiple channels.

Any configuration changes are saved applied only after you press the OK button. You can use the Cancel button to erase any configuration changes you made in the current editing session and close it.

## Operation Control

Silence Notifier is installed as a Windows service and is controllable through the Windows service management console. Its status and any errors are reflected in the Windows application event log. Certain messages, like startup/termination, configuration reload, critical errors, etc. are logged no matter whether you have checked any “Log to system error log” checkboxes.

## Support

Please visit <http://www.digital-loggers.com> for more frequently asked questions, free driver updates, manuals and accessories. If we haven't answered your questions here, please call (408) 330-5599 or send an email to [support@digital-loggers.com](mailto:support@digital-loggers.com). We'll be glad to help.